

How to assist both researchers and professionals ?

A service provider on earthworm communities



Researchers

Public and private structures, engineering offices, R&D departments...

Purposes

- Improve knowledge of soil fauna communities: Biogeographical patterns, anthropic drivers, etc
- Responding to societal demands on earthworms communities (reference values and thresholds)

Professionals

Farmers, Consulting firms, local authorities, urban planners, Natural area managers...

Requirements

- Knowing the Biological state of their soil
- Assess the impact of their soil management practices

Sarah Guillocheau

www.sarah-guillocheau.com

guillocheau.sarah@gmail.com
+33 6 49 02 82 71

What I provide :

EARTHWORM EXPERTISE

- Support for research on earthworm communities
- Diagnose the ecological status and functionality of soils using accessible indicators



CONSTRUCTION OF THE SAMPLING PLAN

STATISTICAL ANALYSIS



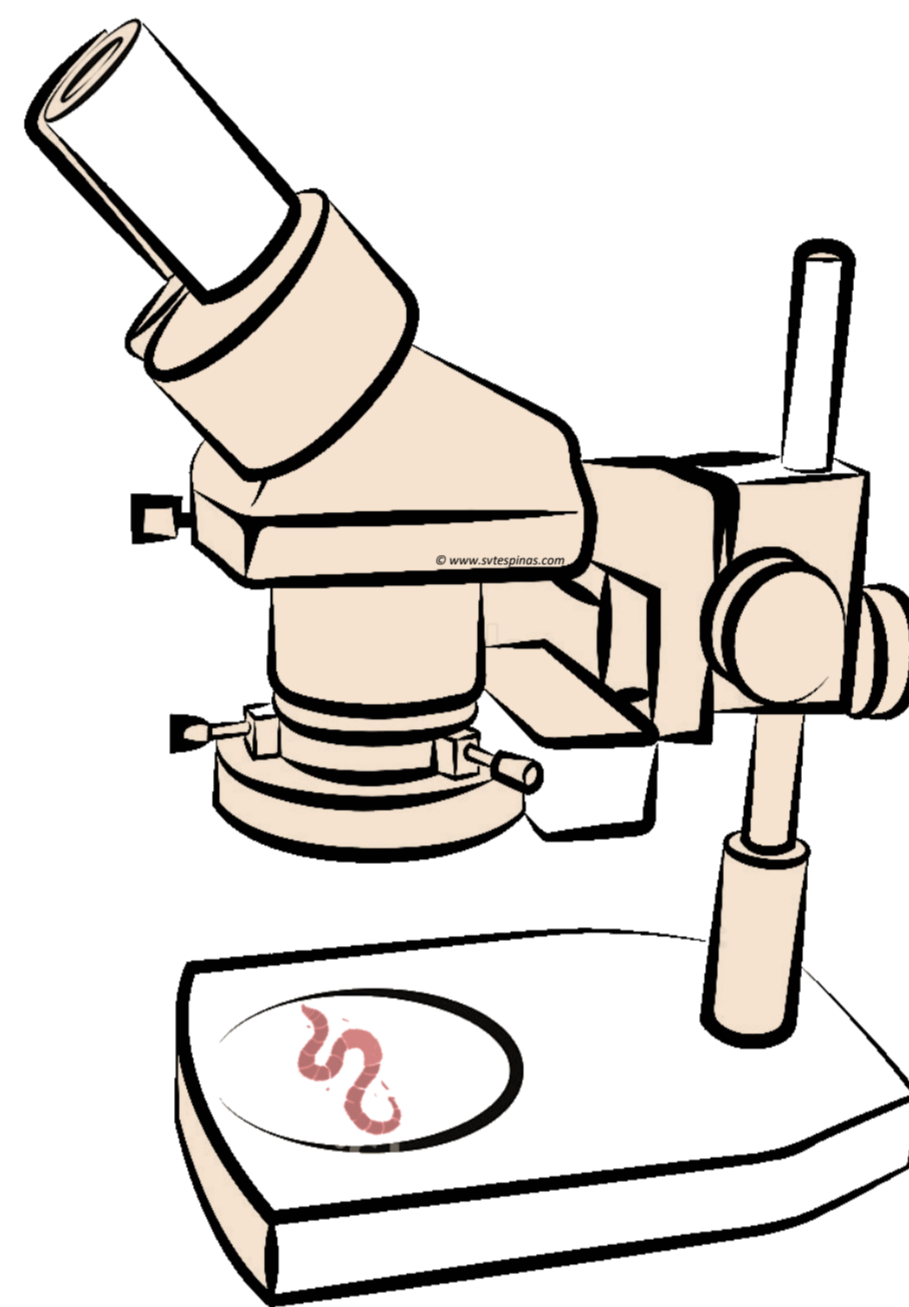
LOGISTICS, PLANNING AND SETTING UP SAMPLING PROTOCOLS

MORPHOLOGICAL DETERMINATION OF EARTHWORM SPECIES

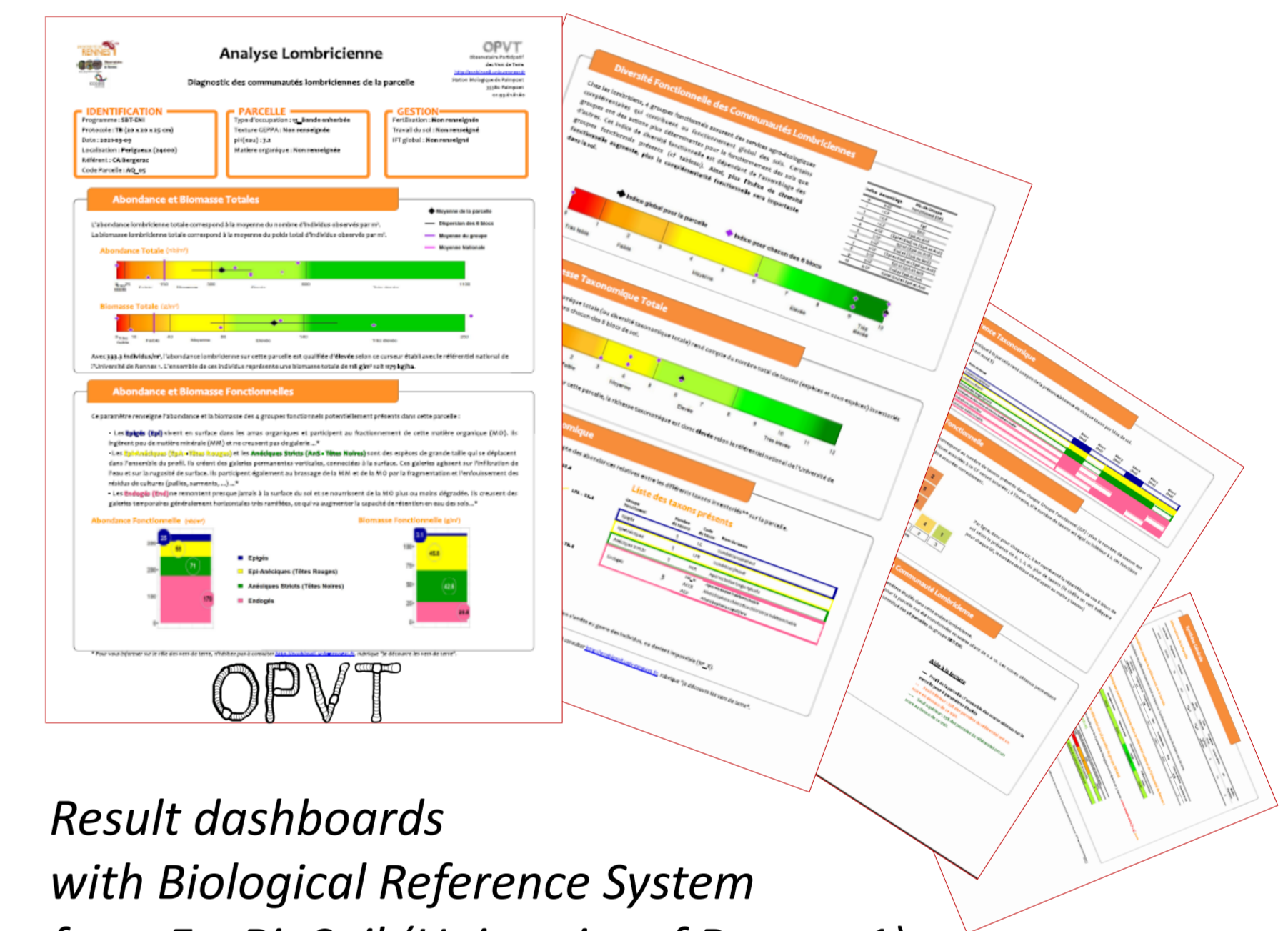
INTERPRETATION OF RESULTS AND REPORTING



Protocol ISO 23611-1:2018
« Spade test » from EcoBioSoil (Rennes)
Chemical extraction and/or hand sorting



(based on Bouché 1972, Sims & Gerard 1985)



Result dashboards with Biological Reference System from EcoBioSoil (University of Rennes 1)

TECHNICAL TRAINING

- Training on operational bio-indication tools
- Adapted for specialized or novice professionals

THEORETICAL TRAINING

- Presentation, role and interest of earthworms
- Influence of major soil and climatic factors on earthworms
- Influence of major agricultural practices on earthworms
- Earthworms as a bioindicator: Current knowledge on favourable / unfavourable practices for earthworms communities
- ...

Tailor-made training according to expectations (audience, time, objectives, etc.)

PRACTICAL TRAINING



Implementation of the "spade test protocol" (Ecobiosoil, Rennes)



Learn to identify earthworm categories (Bouché, 1977) with simplified key from EcoBioSoil (University of Rennes)

SCIENTIFIC POPULARISATION

SCHOOL ACTIVITIES



"Soil Biodiversity and the scientific approach"
• sampling with the mustard protocol
• identification of earthworms categories

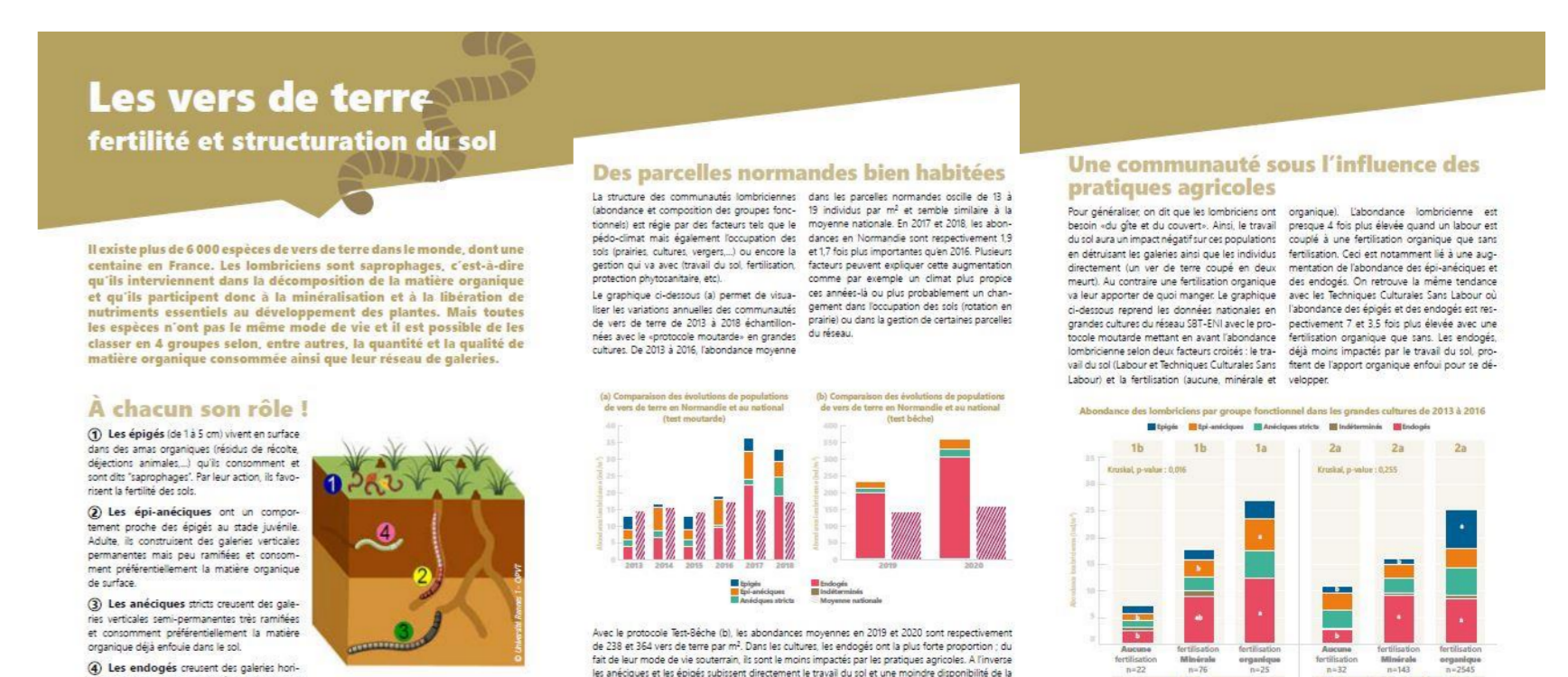
ANIMATION FOR GENERAL PUBLIC

HIGHER EDUCATION

MEDIA

...

GREY LITERATURE



Example of a regional synthesis for the farming community